

The NHS workforce



Expenditure
Around two thirds of NHS provider organisations' total expenditure is on their workforce.¹

The NHS is the largest employer in England, and the 5th largest employer in the world.²



54%
are professionally qualified clinical staff



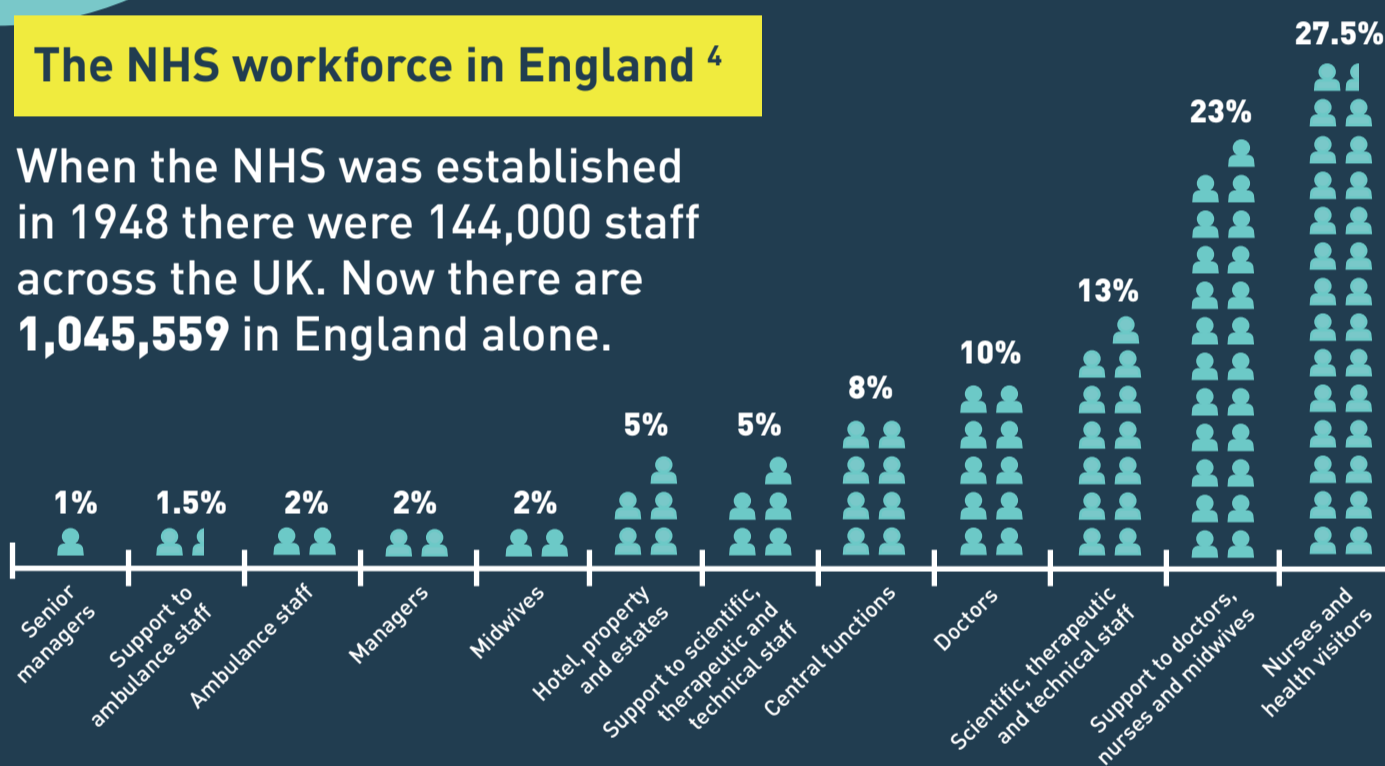
30%
provide support to clinical staff



16%
provide infrastructure support³

The NHS workforce in England⁴

When the NHS was established in 1948 there were 144,000 staff across the UK. Now there are **1,045,559** in England alone.



How has the workforce changed?

January 2010 – January 2017⁵

+13.34% Ambulance staff

+11.40% Midwives

+11.22% Doctors

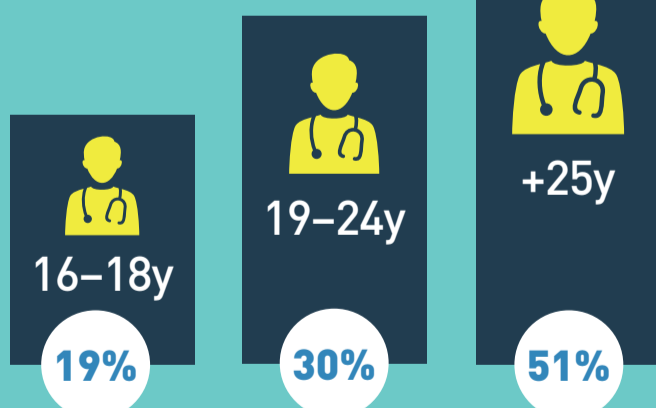
+10.09% Scientific, therapeutic & technical staff

+1.76% Nurses & health visitors

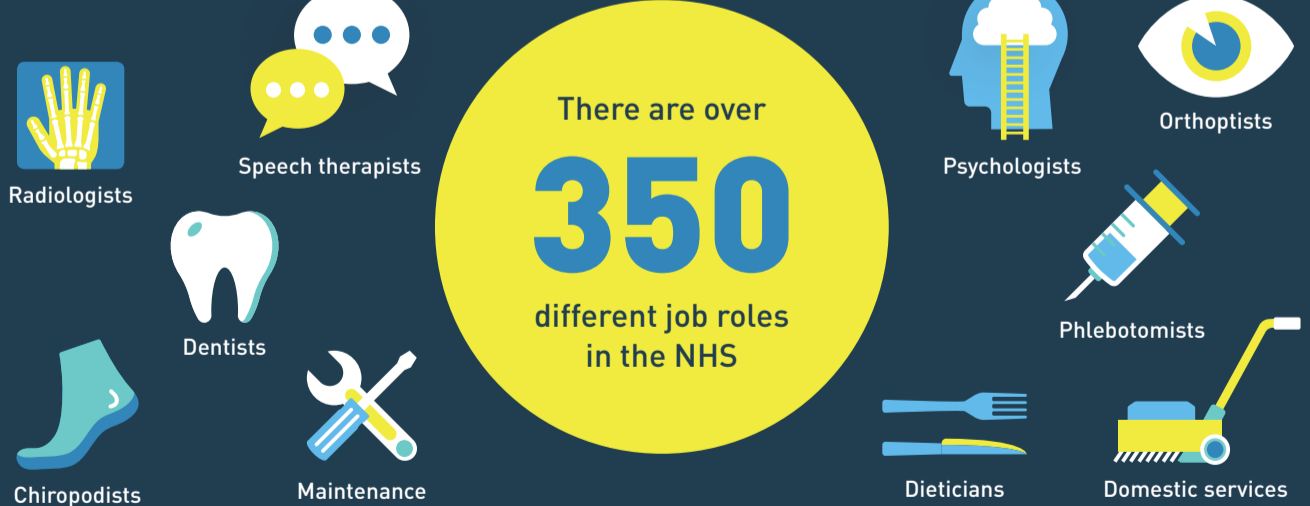
-18.82% Senior managers

-19.42% Managers

NHS apprentices by age⁶



Careers⁷



We are the voice of employers in the NHS. We can help you to support your workforce and put patients first.



Case studies & podcasts



Resources & toolkits



Regional engagement



Consultations



Research & reports

Click: www.nhsemployers.org

Connect: @nhsemployers

Get in touch: enquiries@nhsemployers

¹ Pay Review Body and the Review Body on Doctors' and Dentists' Remuneration submission, NHS Improvement 2016 ² The world's biggest employers infographic, Forbes ^{3,4,5} Hospital and community health services employees across NHS trusts and clinical commissioning groups in England. Figures correct at January 2017. Source: NHS Digital. Figures relate to full time equivalent. ⁶ Apprentices starts in 2014/15. Source: Health Education England ⁷ Source: Health Careers, Health Education England